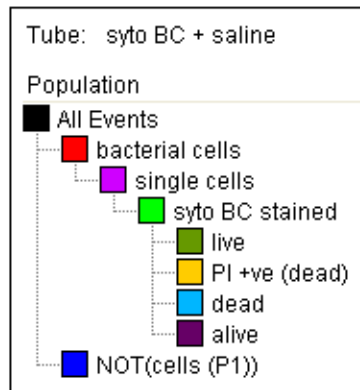
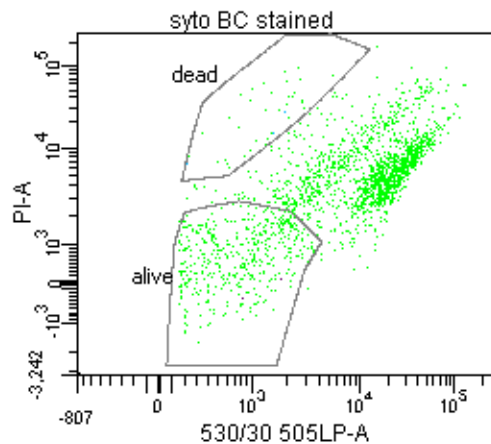
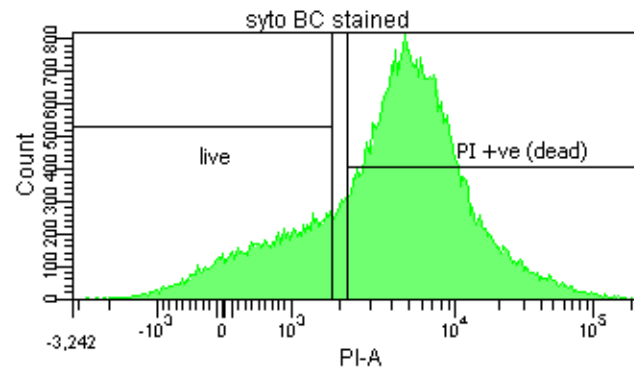
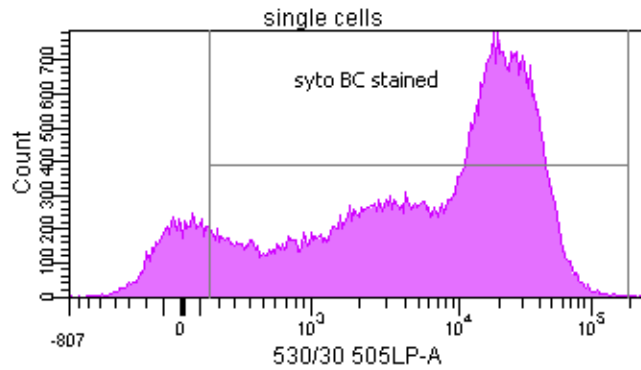
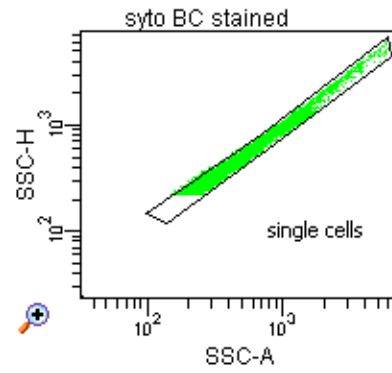
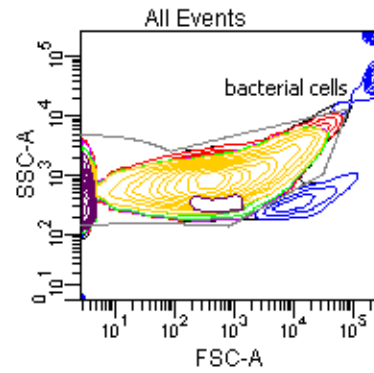
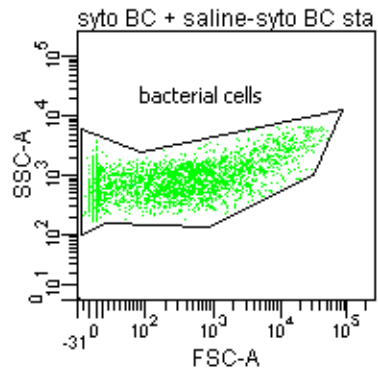


FACSDiva Version 6.1.3



Experiment Name: Phase 1 2x women
Tube Name: syto BC + saline

Population	#Events	%Parent
All Events	69,429	###
bacterial cells	63,257	###
single cells	56,115	88.7
syto BC stained	49,823	88.8
live	11,318	22.7
PI +ve (dead)	36,452	73.2
dead	805	1.6
alive	10,831	21.7
NOT(cells (P1))	6,172	8.9