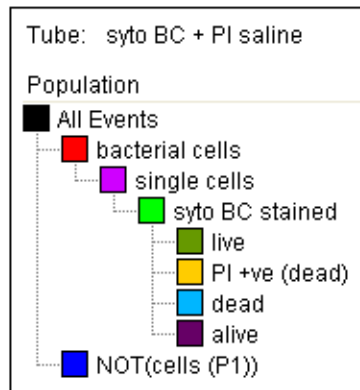
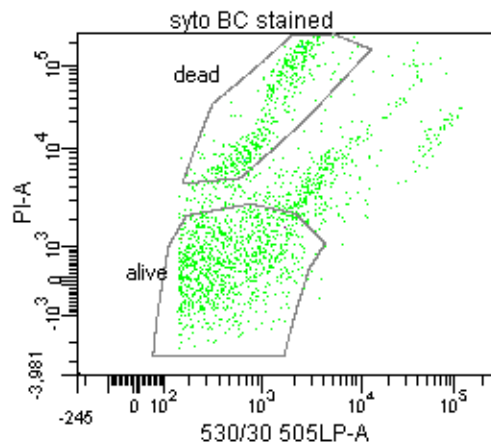
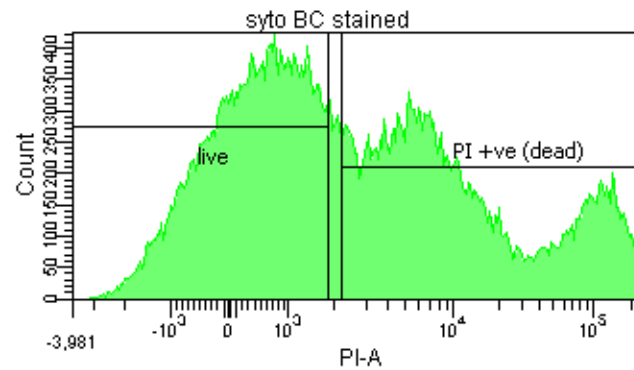
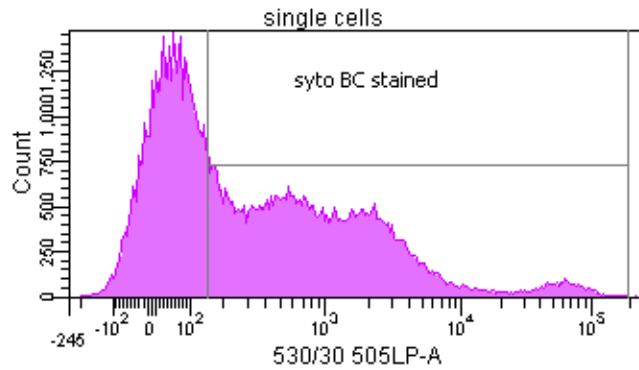
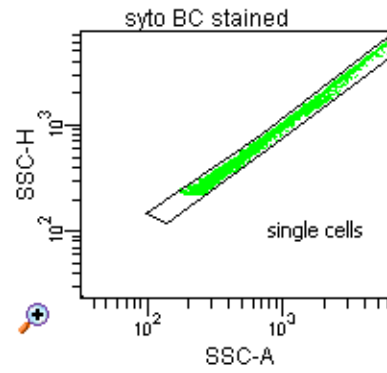
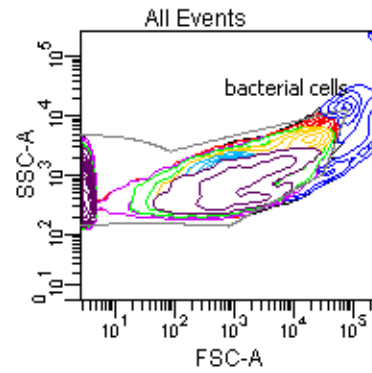
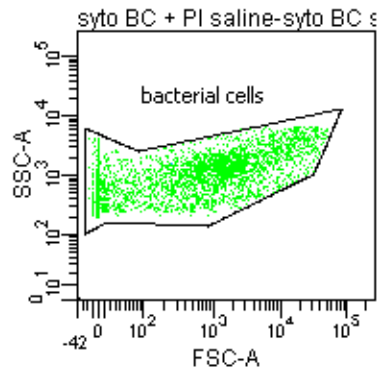


FACSDiva Version 6.1.3



Experiment Name: Phase 1 2x women
 Tube Name: syto BC + PI saline

Population	#Events	%Parent
All Events	98,524	###
bacterial cells	91,642	###
single cells	88,213	96.3
syto BC stained	48,608	55.1
live	23,561	48.5
PI +ve (dead)	22,977	47.3
dead	10,881	22.4
alive	25,360	52.2
NOT(cells (P1))	6,882	7.0