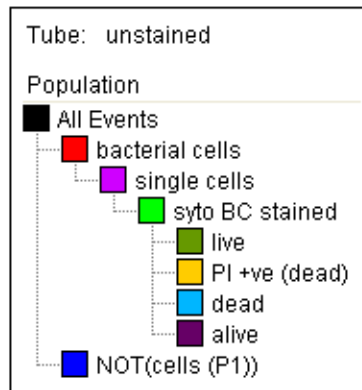
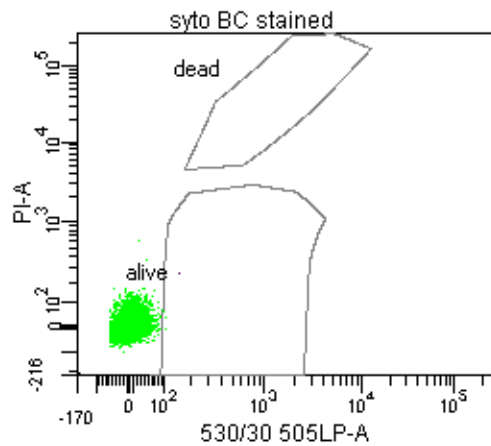
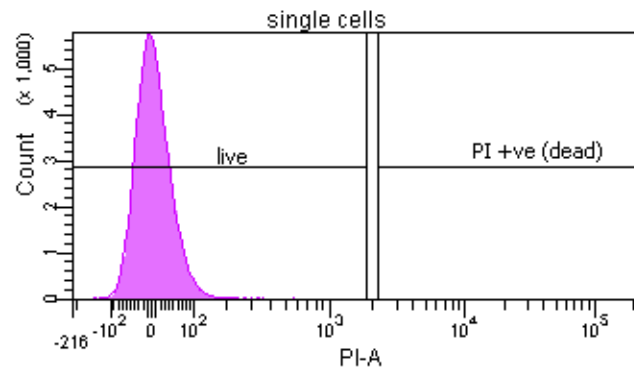
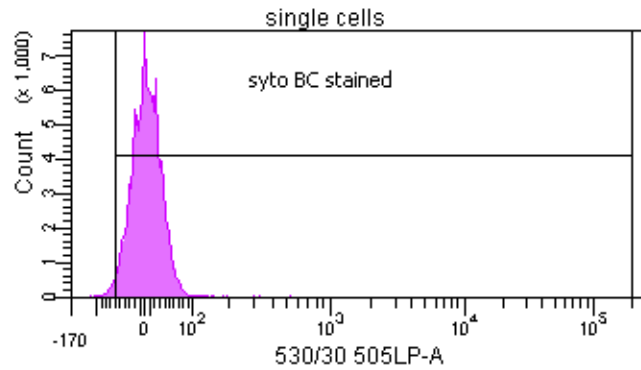
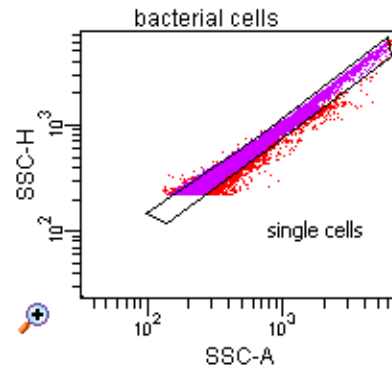
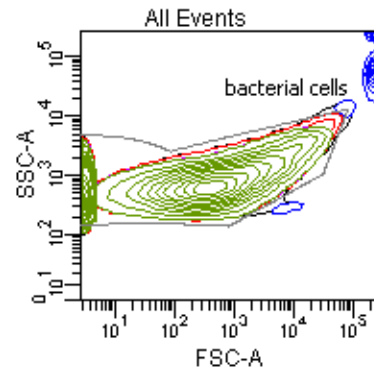
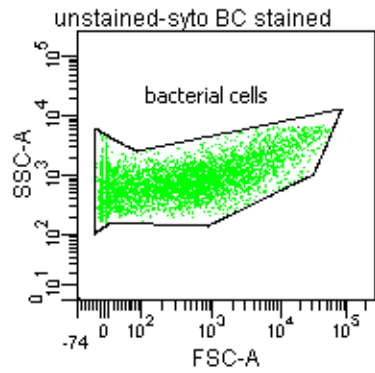


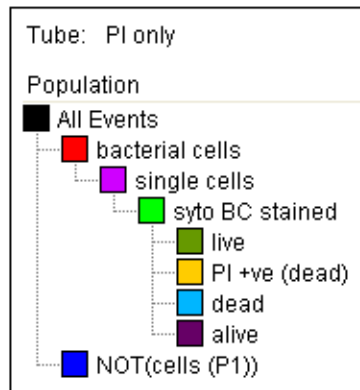
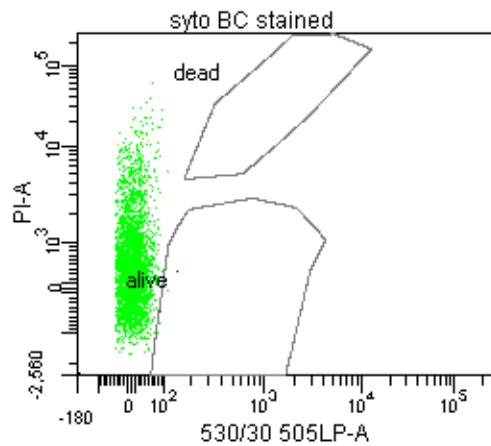
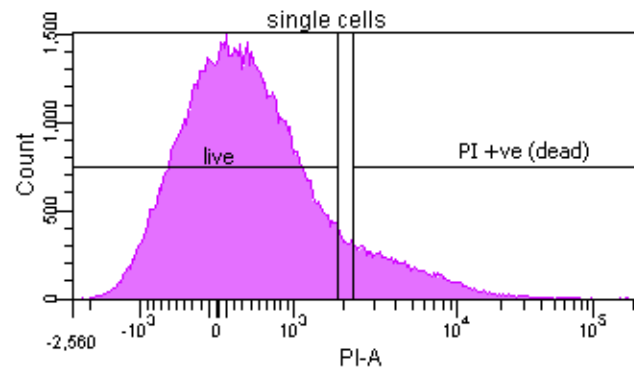
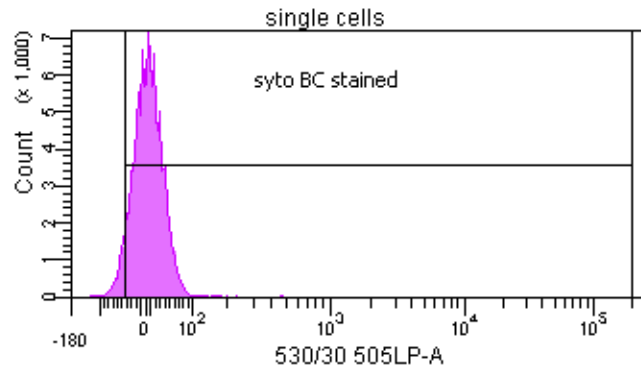
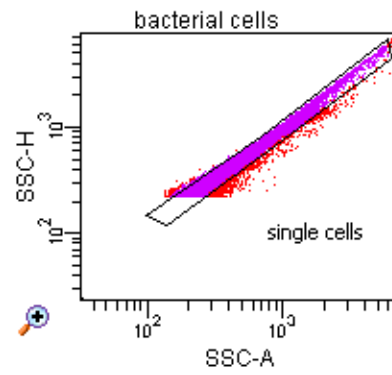
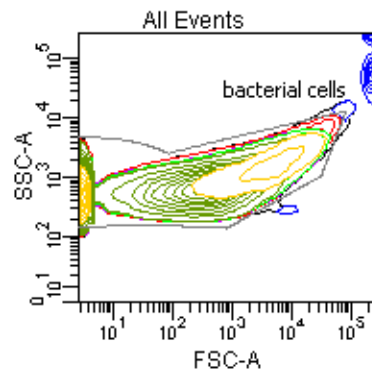
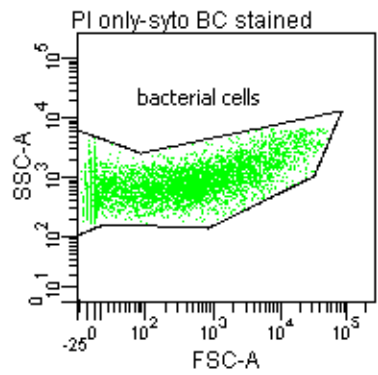
# FACSDiva Version 6.1.3



Experiment Name: Phase 1 1x women  
Tube Name: unstained

Population	#Events	%Parent
All Events	117,347	###
bacterial cells	110,818	###
single cells	100,000	90.2
syto BC stained	98,483	98.5
live	98,483	100.0
PI +ve (dead)	0	0.0
dead	0	0.0
alive	86	0.1
NOT(cells (P1))	6,529	5.6

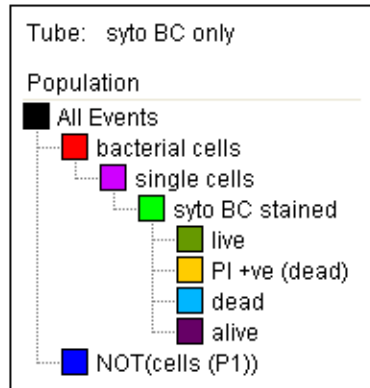
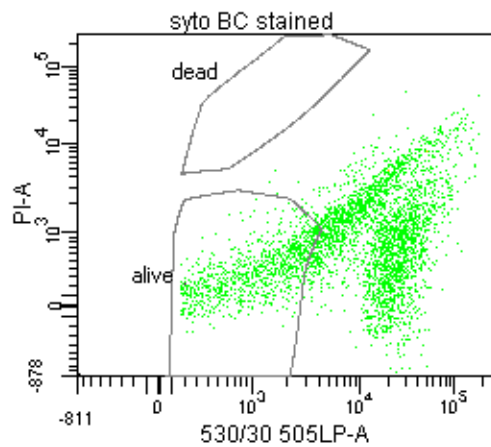
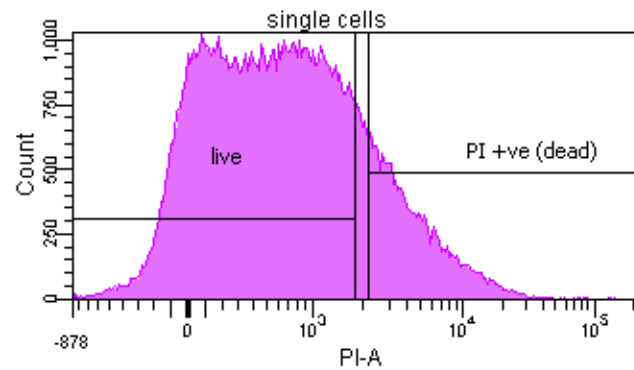
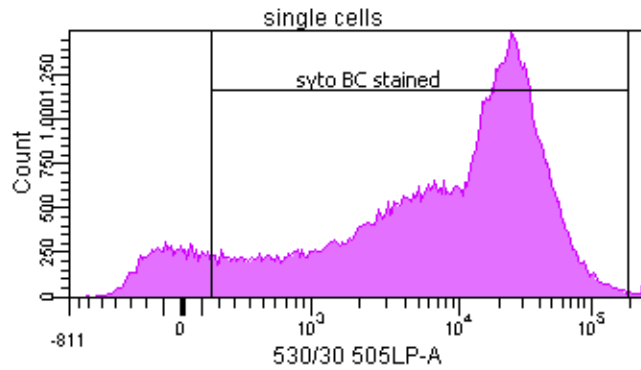
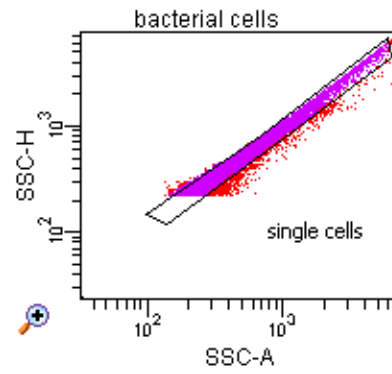
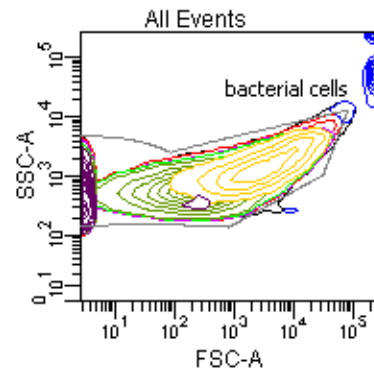
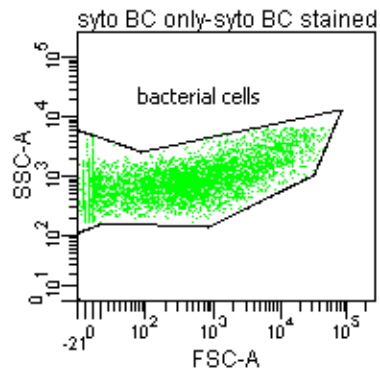
# FACSDiva Version 6.1.3



Experiment Name: Phase 1 1x women  
Tube Name: PI only

Population	#Events	%Parent
All Events	117,543	###
bacterial cells	111,033	###
single cells	100,000	90.1
syto BC stained	94,354	94.4
live	82,516	87.5
PI +ve (dead)	9,709	10.3
dead	0	0.0
alive	109	0.1
NOT(cells (P1))	6,510	5.5

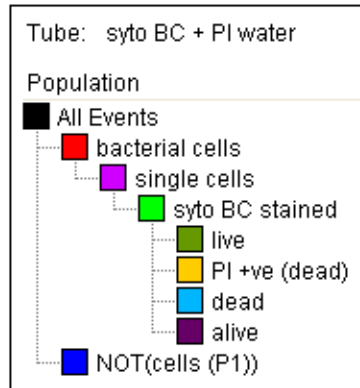
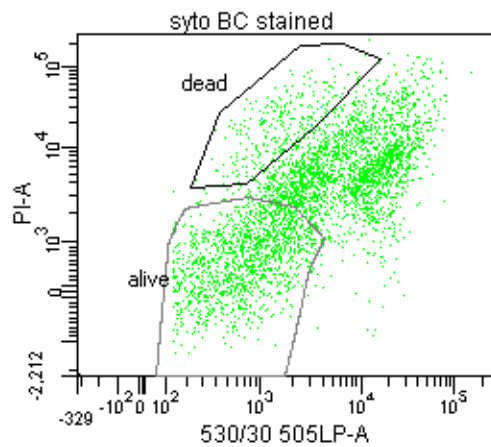
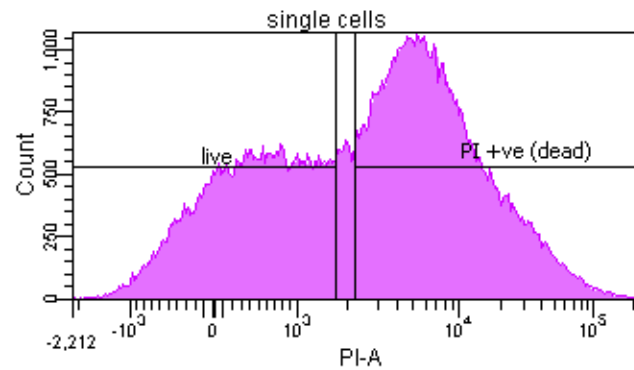
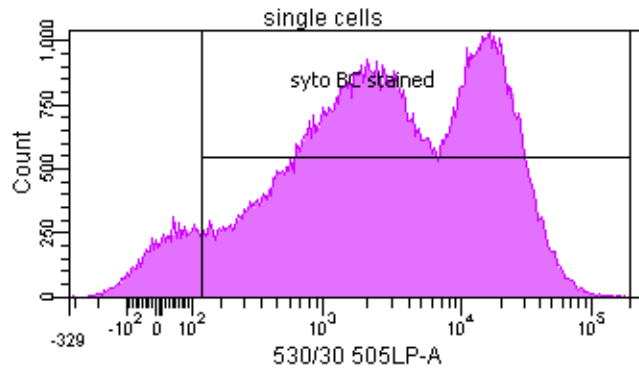
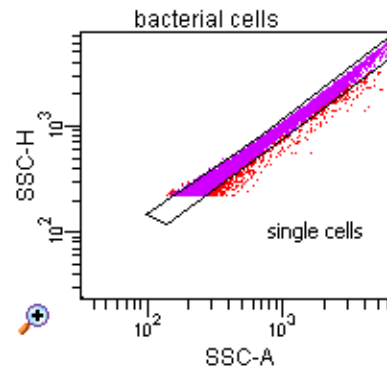
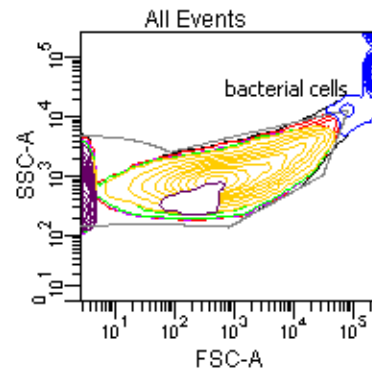
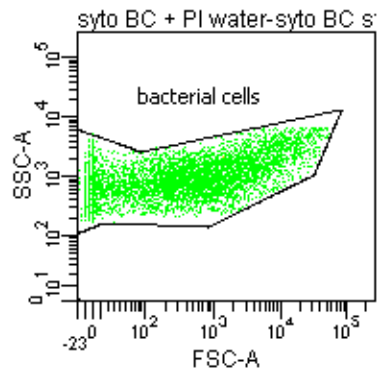
# FACSDiva Version 6.1.3



Experiment Name: Phase 1 1x women  
Tube Name: syto BC only

Population	#Events	%Parent
All Events	117,109	###
bacterial cells	110,629	###
single cells	100,000	90.4
syto BC stained	90,283	90.3
live	70,336	77.9
PI +ve (dead)	15,862	17.6
dead	0	0.0
alive	23,558	26.1
NOT(cells (P1))	6,480	5.5

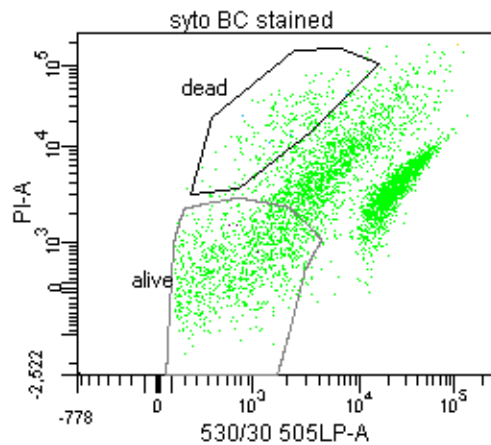
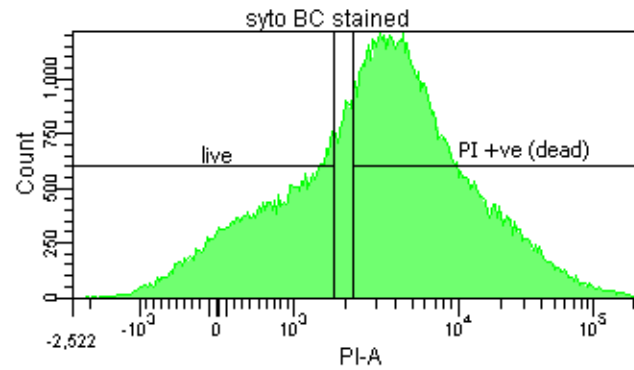
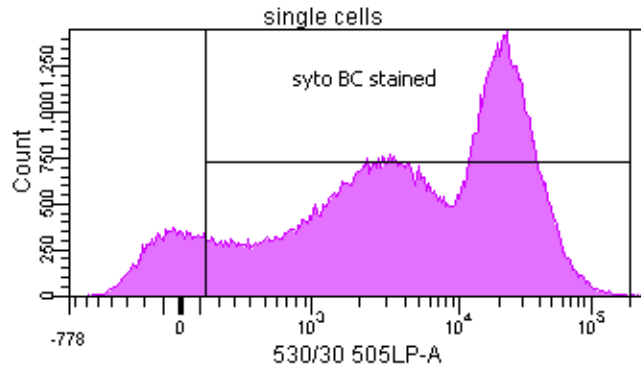
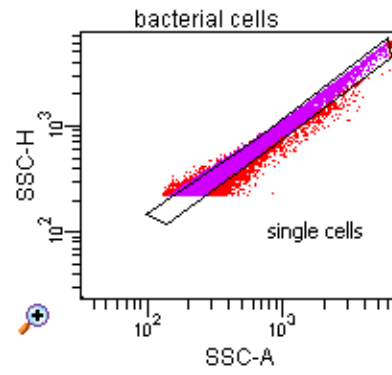
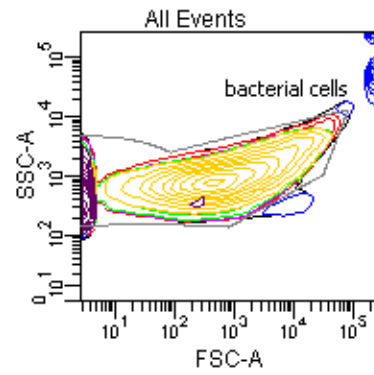
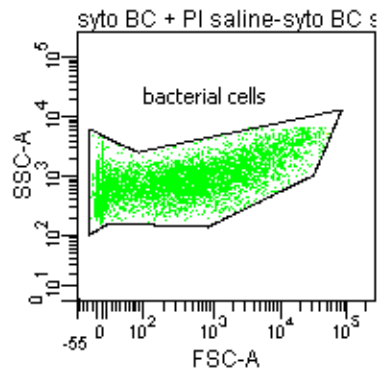
# FACSDiva Version 6.1.3



Experiment Name: Phase 1 1x women  
Tube Name: syto BC + PI water

Population	#Events	%Parent
All Events	125,442	###
bacterial cells	115,023	###
single cells	106,836	92.9
syto BC stained	99,409	93.0
live	33,573	33.8
PI +ve (dead)	60,715	61.1
dead	6,572	6.6
alive	33,537	33.7
NOT(cells (P1))	10,419	8.3

# FACSDiva Version 6.1.3



Tube: syto BC + PI saline

Population

- All Events
- bacterial cells
- single cells
- syto BC stained
  - live
  - PI +ve (dead)
  - dead
  - alive
- NOT(cells (P1))

Experiment Name: Phase 1 1x women  
Tube Name: syto BC + PI saline

Population	#Events	%Parent
All Events	137,094	####
bacterial cells	129,420	####
single cells	110,523	85.4
syto BC stained	99,713	90.2
live	29,220	29.3
PI +ve (dead)	63,303	63.5
dead	4,717	4.7
alive	25,813	25.9
NOT(cells (P1))	7,674	5.6