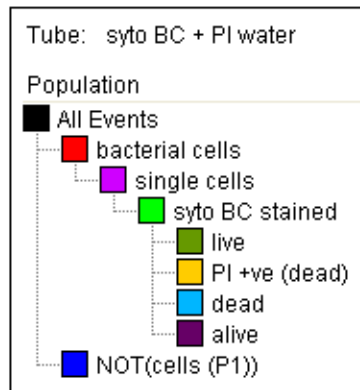
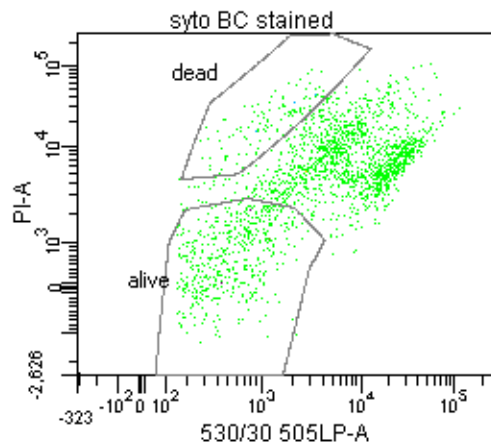
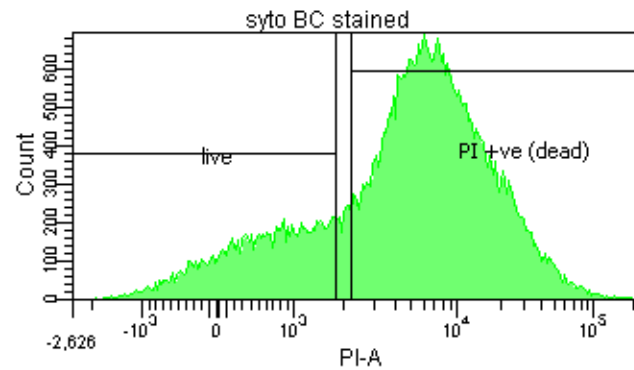
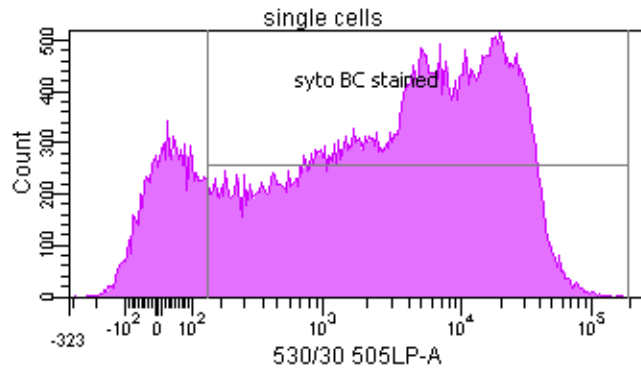
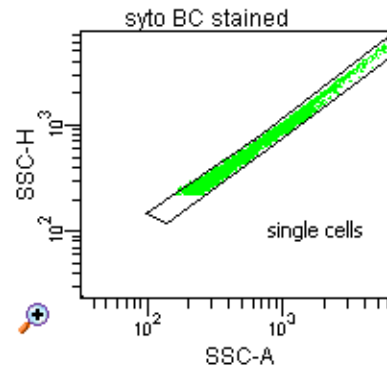
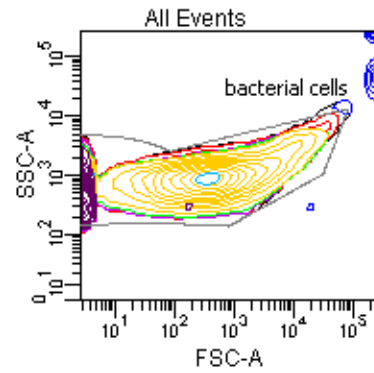
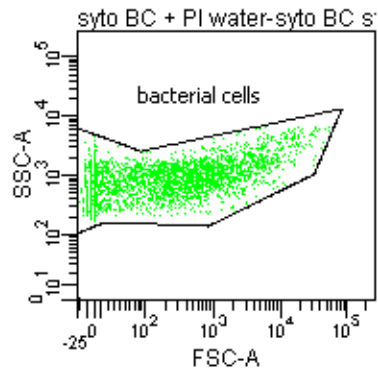


FACSDiva Version 6.1.3



Experiment Name: Phase 1 2x women
Tube Name: syto BC + PI water

Population	#Events	%Parent
All Events	65,818	###
bacterial cells	62,971	###
single cells	58,659	93.2
syto BC stained	49,663	84.7
live	11,273	22.7
PI +ve (dead)	36,865	74.2
dead	3,278	6.6
alive	12,287	24.7
NOT(cells (P1))	2,847	4.3