

Globus Webinar

11 September 2019



Brian Flaherty
Data Product Manager

Housekeeping:

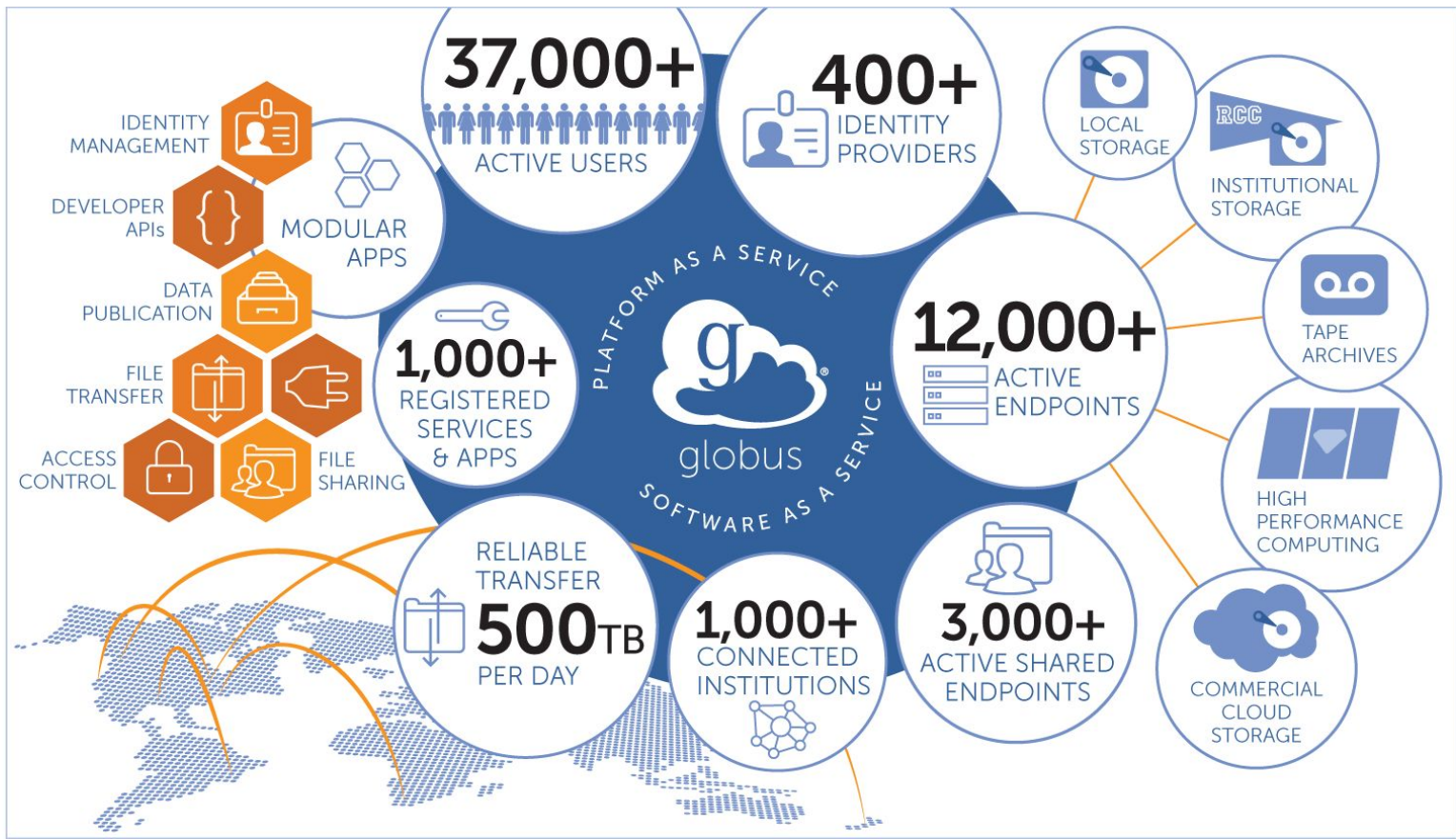
- 12:30-12.50pm: ***Demo***
12.50-1:00pm: ***Q&A***
- **Please mute your audio** when you are not speaking or asking a question
- ***Quick question?*** Unmute and ask me during the webinar.
- ***Longer question / want to discuss?*** Hold it until the Q&A at the end, and then unmute your audio to speak
- The webinar video and slides will be uploaded to the NeSI website

What we will cover today:

1. Quick overview of the service
2. Sharing data with individuals
3. Creating groups to share data
4. Creating personal endpoints.
5. Q&A



Service Overview





NZ Data Transfer Node Endpoints

Endpoint Display Name	Description	Recommended Use
NeSI Wellington DTN	NeSI Globus Endpoint, located at NIWA Wellington (Greta Point)	transferring files to/from Māui or Mahuika, and file-sharing.
nesi#otago-dtn02	Endpoint 02 for the High Capacity Research Storage Cluster, Dunedin Campus, University of Otago	Primary endpoint for Otago Dunedin; uses local service accounts or globus sharing.
University of Auckland Research Data DTN	Endpoint provides access to UoA research data.	transferring files between UoA research drives and Māui or Mahuika
AgResearch DTN01	A Globus endpoint attached to AgResearch's institutional Linux storage platform	Sharing large datasets with external collaborators and moving large datasets between NeSI's facility and AgResearch's internal storage platform

To use Globus on **NeSI** platforms, you need:

1. A Globus account (see [Initial Globus Sign-Up and Globus Id](#))
2. An active NeSI account (see [Creating a NeSI Account](#))
3. An active project (access to one or both of our HPCs: Mahuika or Māui)
4. Access to the Globus endpoint platform where files will be transferred to/from.

Your Home Directory

On NeSI's Māui/Mahuika cluster

filesystem	visible to Globus	storage	persistent	Globus usage
<code>/home/</code> ; or <code>'~/</code>	yes (default)	20GB	yes	possible, not recommended
<code>/nesi/nobackup/<project_code></code>	yes	yes	no	yes
<code>/nesi/project/<project_code></code>	no	-	yes	no

1. <https://support.nesi.org.nz/>
2. <https://docs.globus.org/how-to/share-files/>
3. <https://docs.globus.org/how-to/managing-groups/>
4. <https://www.globus.org/globus-connect-personal>
5. <https://docs.globus.org/how-to/configure-firewall-gcp/>
6. <https://support.nesi.org.nz/hc/en-gb/articles/360000217915-Personal-Globus-Endpoint-Configuration>



Start Here:

<https://transfer.nesi.org.nz/>



Demonstration

Getting Support

- Email support@nesi.org.nz at any time with questions or to request help with setting up your Data Transfer accounts or running your first transfer.
- Documentation is also available (and regularly being updated) in our **User Support Centre**: support.nesi.org.nz



Getting Started ▾

Scientific Computing ▾

Storage ▾

General ▾

Key Software Packages ▾



Questions?

Thank You.

The recording & slides will be posted to the NeSI website soon.



www.nesi.org.nz

[@NeSI_NZ](https://twitter.com/NeSI_NZ)

support@nesi.org.nz

brian.flaherty@nesi.org.nz