

Data Publishing

Assoc. Prof. Rochelle Constantine

FigShare Fest NZ
24 October 2018

Data – many shapes, sizes & 'owners'

Images – photographs, UAV-drone footage

Sounds – remotely deployed arrays, hydrophone single deployments

Genetics – databases, sequences, genomes

Decades of data

Thousands of images

Months of sound recordings

And it just keeps coming...

Journal requirements for access – ethics & control?

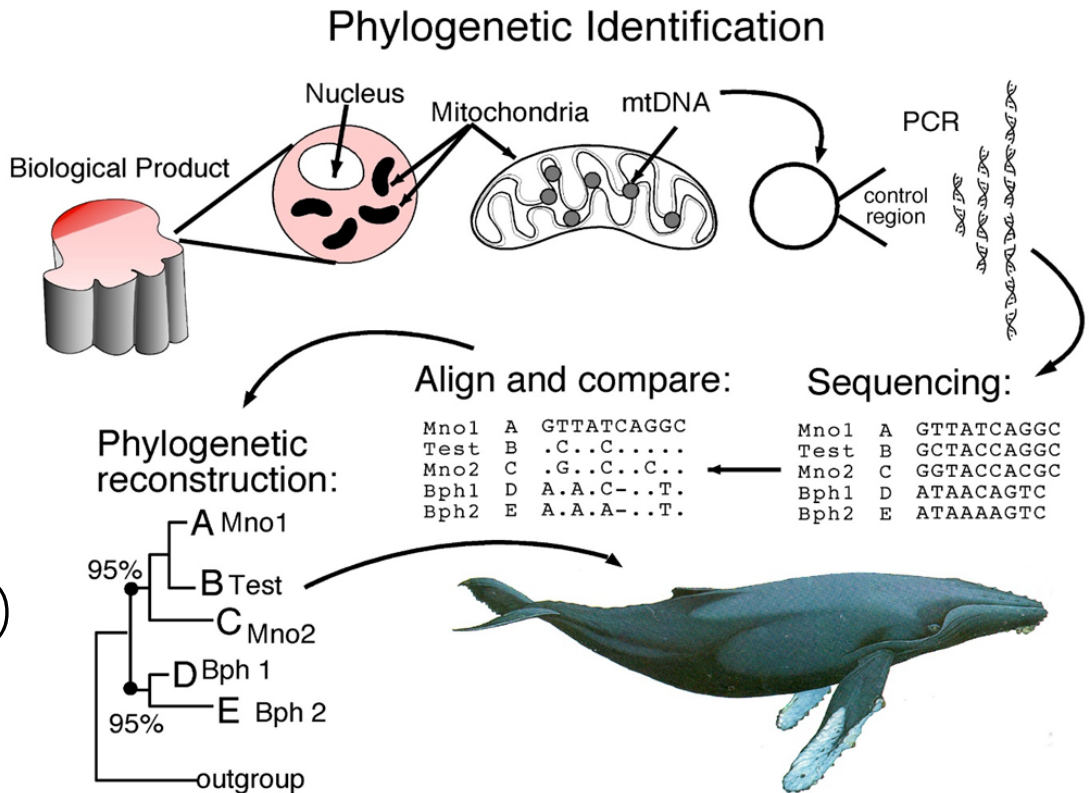
Genetics + Photo-identification data

Big, growing datasets

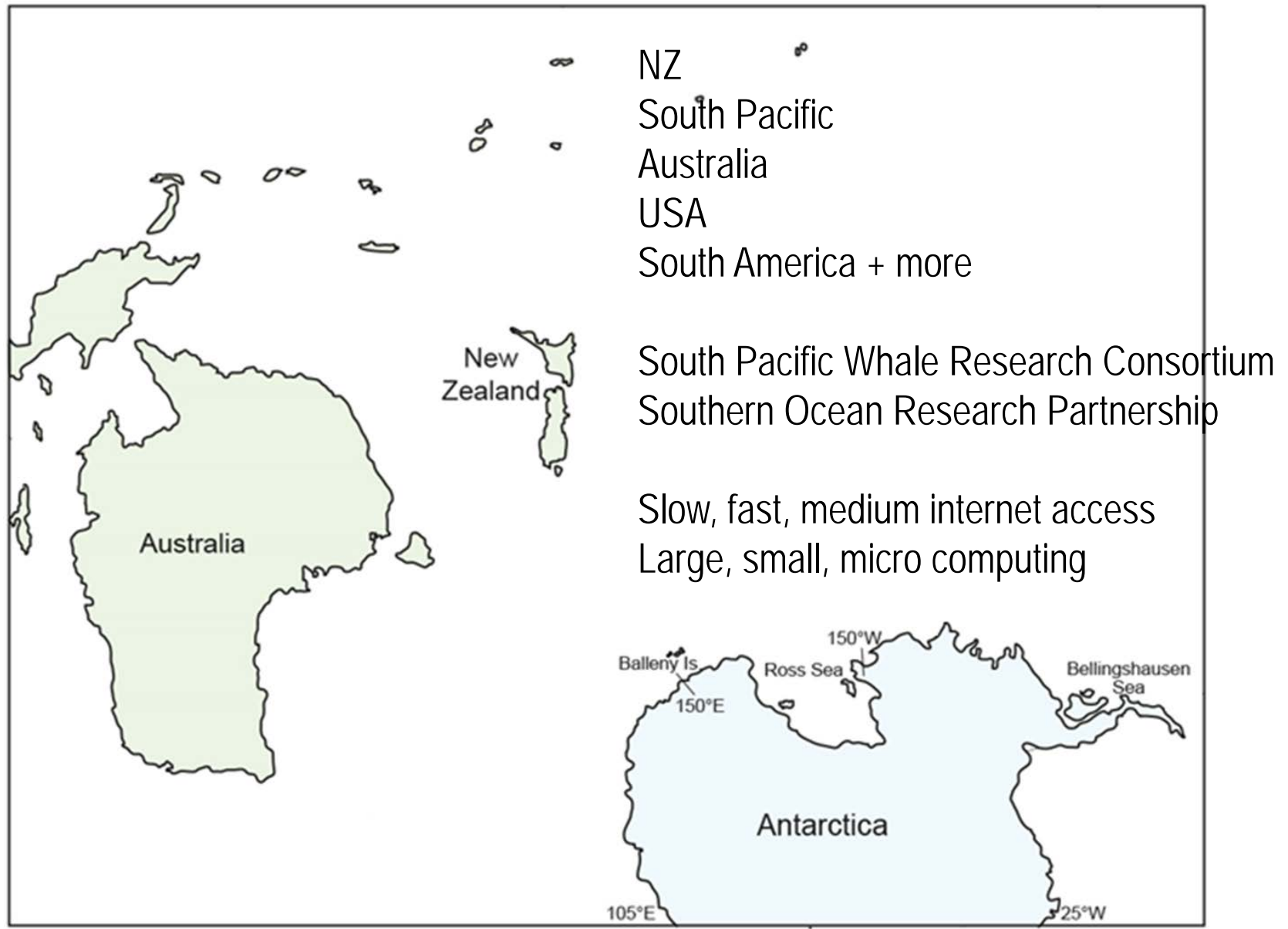
NZ Cetacean Tissue Archive
~2600 samples

Molecular ecology focus
~1500 samples

GenBank (NIH – USA supported)



Large active global research groups



How to give access to resources?



BOI_365_RS.jpg (47.76 kB)



BOI_385_LS.jpg (84.98 kB)



BOI_386_RS.jpg (137.01 kB)



BOI_387_RS.jpg (63.27 kB)

Cite

Download all (45.98 MB)

Share

Embed

+ Collect (you need to log in first)

494 files 1 / 124 < >  

Bay of Islands Bottlenose Dolphin Catalogue photos

Fileset posted on 13.11.2017, 11:04 by [Rochelle Constantine](#)

118
views

27
downloads

0
citations

This catalogue is a collection of uniquely identified bottlenose dolphin dorsal fin photos from the Bay of Islands, New Zealand 1993-2013. Where possible there is a right and left side image of each dorsal fin.





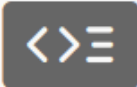
THE UNIVERSITY OF
AUCKLAND
Te Whare Wānanga o Tāmaki Makaurau
NEW ZEALAND

Constantine, Rochelle (2017): Bay of Islands Bottlenose Dolphin Catalogue photos. figshare.

<https://doi.org/10.17608/k6.auckland.5417746.v1>


Data online to move research forward

[Browse](#)




TEXT

Riekkola-et-al-20... .txt (1.18 kB)



DATASET

Riekkola-et-al-20... .xlsx (437.75 kB)

[Download all \(438.93 kB\)](#)  This item is shared privately

Application of a multi-disciplinary approach to reveal population structure and Southern Ocean feeding grounds of humpback whales: Data and README

Fileset modified on 22.06.2018, 16:34

State-space modelled data and README files associated with Riekkola et al. (2018). Application of a multi-disciplinary approach to reveal population structure and Southern Ocean feeding grounds of humpback

What do 'we' need?



Easy to use

Easy to understand what it means

- How open is open?
- Do people actually 'share and share alike'?
- How long are we in for?
- What happens when technology shifts?

Greater capacity for shared work in real-time